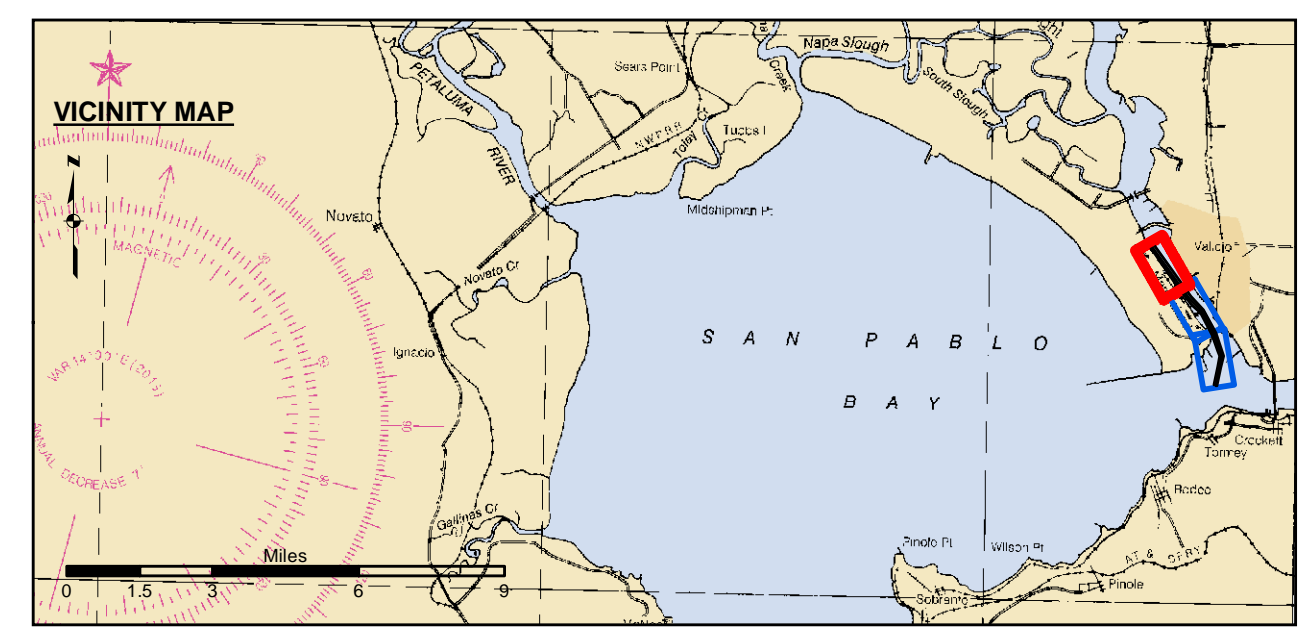
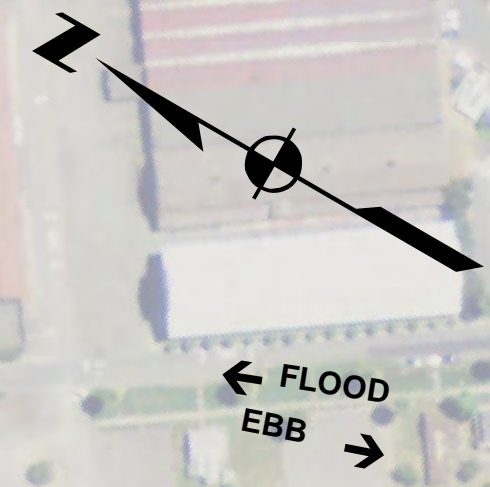
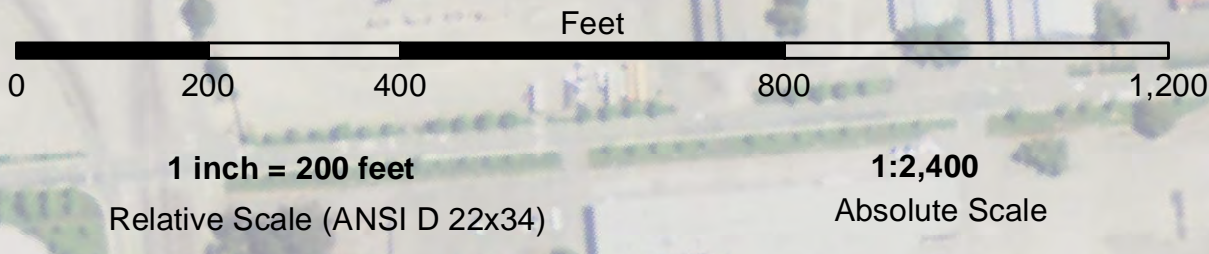


NAD 83 CHANNEL ANGLE POINT		
Angle Pt	X	Y
C01	6051581.21	2230222.67
C02	6055795.81	2224330.97
C03	6057191.11	2222944.87
C04	6058518.11	2220503.97
C05	6059347.51	2218102.87
C06	6058696.31	2214902.17

NAD 83 CHANNEL ANGLE POINT		
Angle Pt	X	Y
1	6051829.91	2230390.67
2	6052091.81	2230024.57
3	6056039.61	2224505.87
4	6057346.91	2223082.07
5	6058699.11	2220590.07
6	6059555.31	2218121.17
7	6058891.41	2214858.27
8	6058501.11	2214945.97
9	6059139.71	2218084.57
10	6058937.71	2218596.57
11	6058337.01	2220417.87
12	6057035.31	2222807.67
13	6056140.51	2223621.17
14	6054337.11	2225843.77
15	6051448.71	2230133.17

PRELIMINARY ISSUE
THIS PLAN ISSUED FOR
ADVANCE INFORMATION ONLY



Federal Navigation Channel	Beacon, General	Contours
Shoaling Area	Obstruction Point	
Placement Area	Navigation Buoy	-30
Anchorage Area	Navigation Buoy	-29
Wreck Area	Shoalest Sounding*	-28
Submerged Wreck		-27
Angle Point		-26

NOTES:
DRAWING NOT TO BE USED FOR NAVIGATION. ONLY CHANNEL CONDITION AT DATE OF SURVEY.
THE LOCATION OF ALL NAVIGATION AIDS ARE BASED ON INFORMATION PROVIDED BY THE U.S. COAST GUARD. BUOY LOCATIONS REPRESENT THE POSITION OF THE SINKER ONLY.
SURVEYED BY THE CORPS OF ENGINEERS.
SOUNDINGS WERE TAKEN BY FATHOMETER AND ARE SHOWN TO THE NEAREST TENTH OF A FOOT.
SOUNDINGS ARE BASED ON THE DATUM OF MEAN LOWER LOW WATER AT THE LOCALITY.
VERTICAL CONTROL:
USACE BM NAPAR03, MLLW=11.609 FT
MARK LOCATED ON PIER 56, MARE ISLAND
NOS BM 5218 K 1976 (PID-JT9537), MLLW = 12.136 FT
MARK US LOCATED AT SOUTH END OF MARE ISLAND
http://hidesandcurrents.noaa.gov/data_menu.shtml?sn=9415218
MARE ISLAND, CA & TYPE = BENCH MARK SHEETS
TIDE GAUGE LOCATION:
1. NOAA STATION 941 5218 - ONLINE
2. MARE ISLAND BERTH 2
HORIZONTAL GPS CONTROL
COAST GUARD D-BEACON
PLANE GRID AND COORDINATES ARE BASED ON THE STATE OF CALIFORNIA COORDINATE SYSTEM, LAMBERT CONFORMAL PROJECTION, ZONE III NAD 83, CALIFORNIA, AS DESCRIBED IN SPECIAL PUBLICATION NO. 235, PUBLISHED BY NATIONAL OCEAN SURVEY.
1.00 INDICATES THE NUMBER AND BEGINNING OF A LINE OF SOUNDINGS.
PROJECT DEPTH IS 30 FEET FOR MAIN CHANNEL

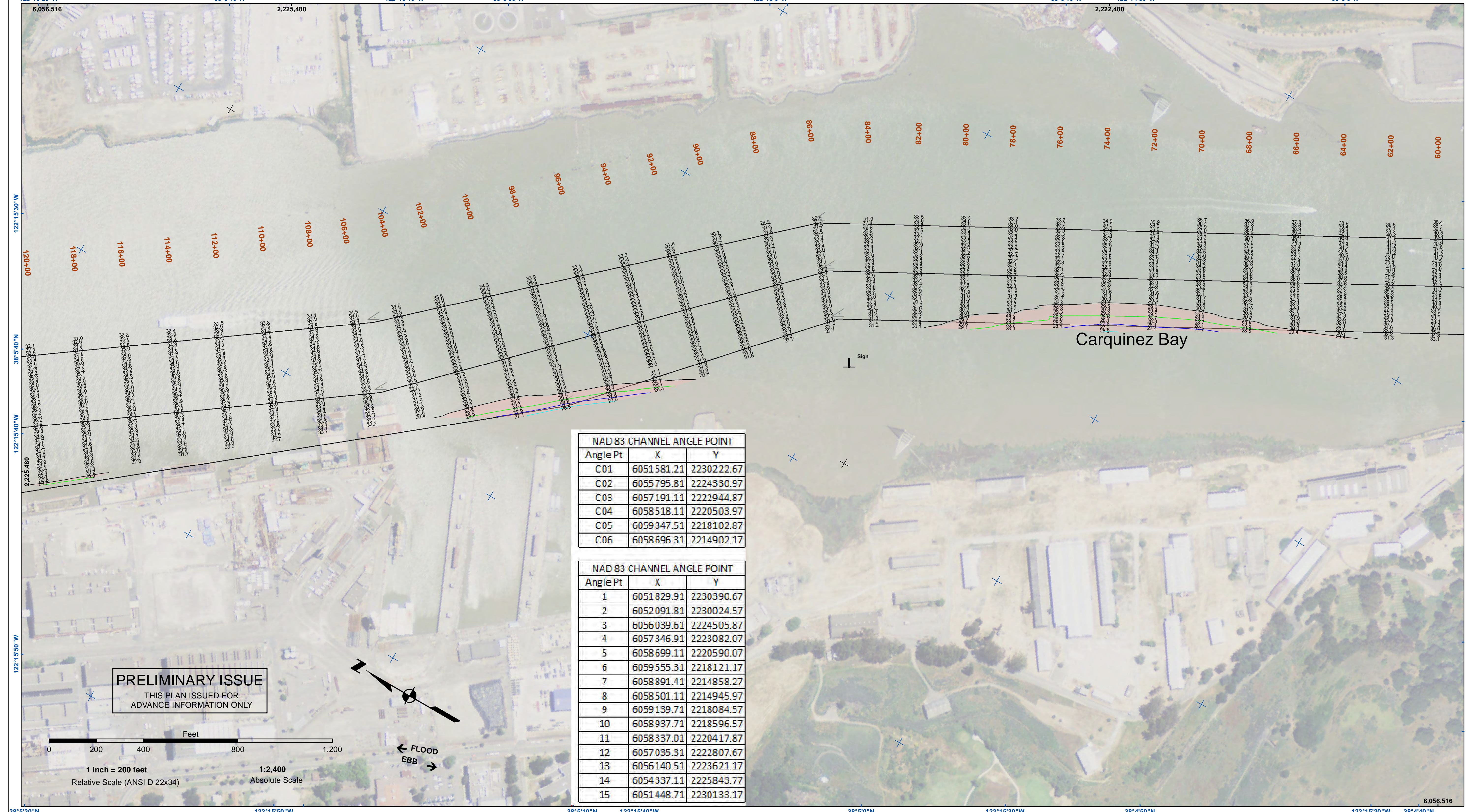
US Army Corps of Engineers
San Francisco District
450 Market Street
San Francisco, CA 94102

DISCLAIMER: The United States Government furnishes this information for the general information of the recipient and does not warrant, represent, or imply that the US Government makes any warranty, expressed or implied, concerning the accuracy, completeness, or reliability of the information. The recipient shall be responsible for the use of the information and the data for any other than its intended purpose. The US Government assumes no liability for the use of the information for any other than its intended purpose. The recipient shall be responsible for the use of the information for any other than its intended purpose. The US Government assumes no liability for the use of the information for any other than its intended purpose.

Prepared Under the Direction of: JOHN D. CUNNINGHAM LT COLONEL, C.E., DISTRICT ENGINEER	Chart Date: Jul 22, 2020
Submitted: Hydro Survey Team Leader	Designed by: PDT
Recommended: Chief, Hydro Survey Section	Drawn by: PDT
Approved: Chief, Construction Branch	

MARIN COUNTY
CALIFORNIA
MARE ISLAND STRAIT
CONDITION SURVEY
24 JUNE 2020

Sheet Reference Number
1 of 3

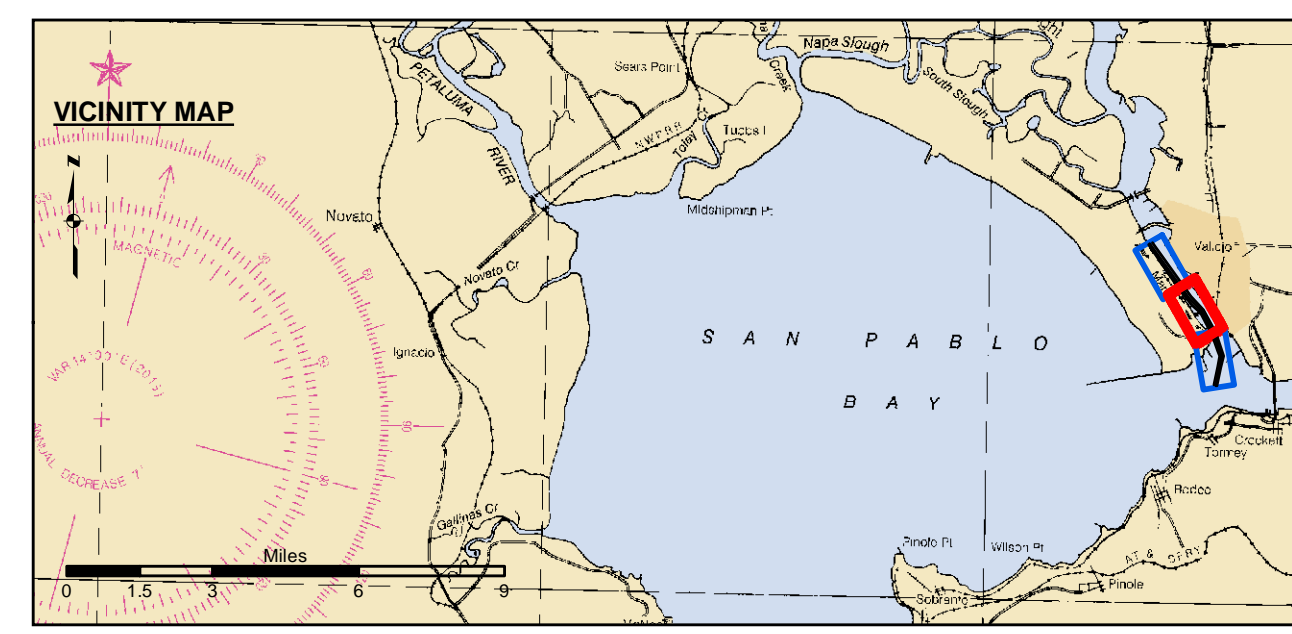


PRELIMINARY ISSUE
THIS PLAN ISSUED FOR
ADVANCE INFORMATION ONLY



NAD 83 CHANNEL ANGLE POINT		
Angle Pt	X	Y
C01	6051581.21	2230222.67
C02	6055795.81	2224330.97
C03	6057191.11	2222944.87
C04	6058518.11	2220503.97
C05	6059347.51	2218102.87
C06	6058696.31	2214902.17

NAD 83 CHANNEL ANGLE POINT		
Angle Pt	X	Y
1	6051829.91	2230390.67
2	6052091.81	2230024.57
3	6056039.61	2224505.87
4	6057346.91	2223082.07
5	6058699.11	2220590.07
6	6059555.31	2218121.17
7	6058891.41	2214858.27
8	6058501.11	2214945.97
9	6059139.71	2218084.57
10	6058937.71	2218596.57
11	6058337.01	2220417.87
12	6057035.31	2222807.67
13	6056140.51	2223621.17
14	6054337.11	2225843.77
15	6051448.71	2230133.17



Federal Navigation Channel	Beacon, General	Contours
Shoaling Area	Obstruction Point	-30
Placement Area	Navigation Buoy	-29
Anchorage Area	Navigation Buoy	-28
Wreck Area	Shoalest Sounding*	-27
Submerged Wreck		-26
Angle Point		

NOTES:
DRAWING NOT TO BE USED FOR NAVIGATION. ONLY CHANNEL CONDITION AT DATE OF SURVEY.
THE LOCATION OF ALL NAVIGATION AIDS ARE BASED ON INFORMATION PROVIDED BY THE U.S. COAST GUARD. BUOY LOCATIONS REPRESENT THE POSITION OF THE SINKER ONLY.

SURVEYED BY THE CORPS OF ENGINEERS.
SOUNDINGS WERE TAKEN BY FATHOMETER AND ARE SHOWN TO THE NEAREST TENTH OF A FOOT.
SOUNDINGS ARE BASED ON THE DATUM OF MEAN LOWER LOW WATER AT THE LOCALITY.

VERTICAL CONTROL:
USACE BM NAPAR03, MLLW=11.609 FT
MARK LOCATED ON PIER 56, MARE ISLAND

NOS BM 5218 K 1976 (PID=J537), MLLW = 12.136 FT
MARK US LOCATED AT SOUTH END OF MARE ISLAND
http://hidesandcurrents.noaa.gov/data_menu.shtml?sn=9415218
MARE ISLAND, CA & TYPE = BENCH MARK SHEETS

TIDE GAUGE LOCATION:
1. NOAA STATION 941 5218 - ONLINE
2. MARE ISLAND BERTH 2

HORIZONTAL GPS CONTROL
COAST GUARD D-BEACON

PLANE GRID AND COORDINATES ARE BASED ON THE STATE OF CALIFORNIA COORDINATE SYSTEM, LAMBERT CONFORMAL PROJECTION, ZONE III NAD 83, CALIFORNIA, AS DESCRIBED IN SPECIAL PUBLICATION NO. 235, PUBLISHED BY NATIONAL OCEAN SURVEY.

1.00 INDICATES THE NUMBER AND BEGINNING OF A LINE OF SOUNDINGS.
PROJECT DEPTH IS 30 FEET FOR MAIN CHANNEL

US Army Corps of Engineers
San Francisco District
450 Market Street
San Francisco, CA 94102

DISCLAIMER: The United States Government furnishes access to this information for the purpose of understanding the accuracy, completeness, and reliability of the information and the data furnished. The United States shall be under no liability whatsoever to any person by reason of any use made thereof. These data belong to the Government. Therefore the recipient may not transfer these data to others without also transferring this Disclaimer.

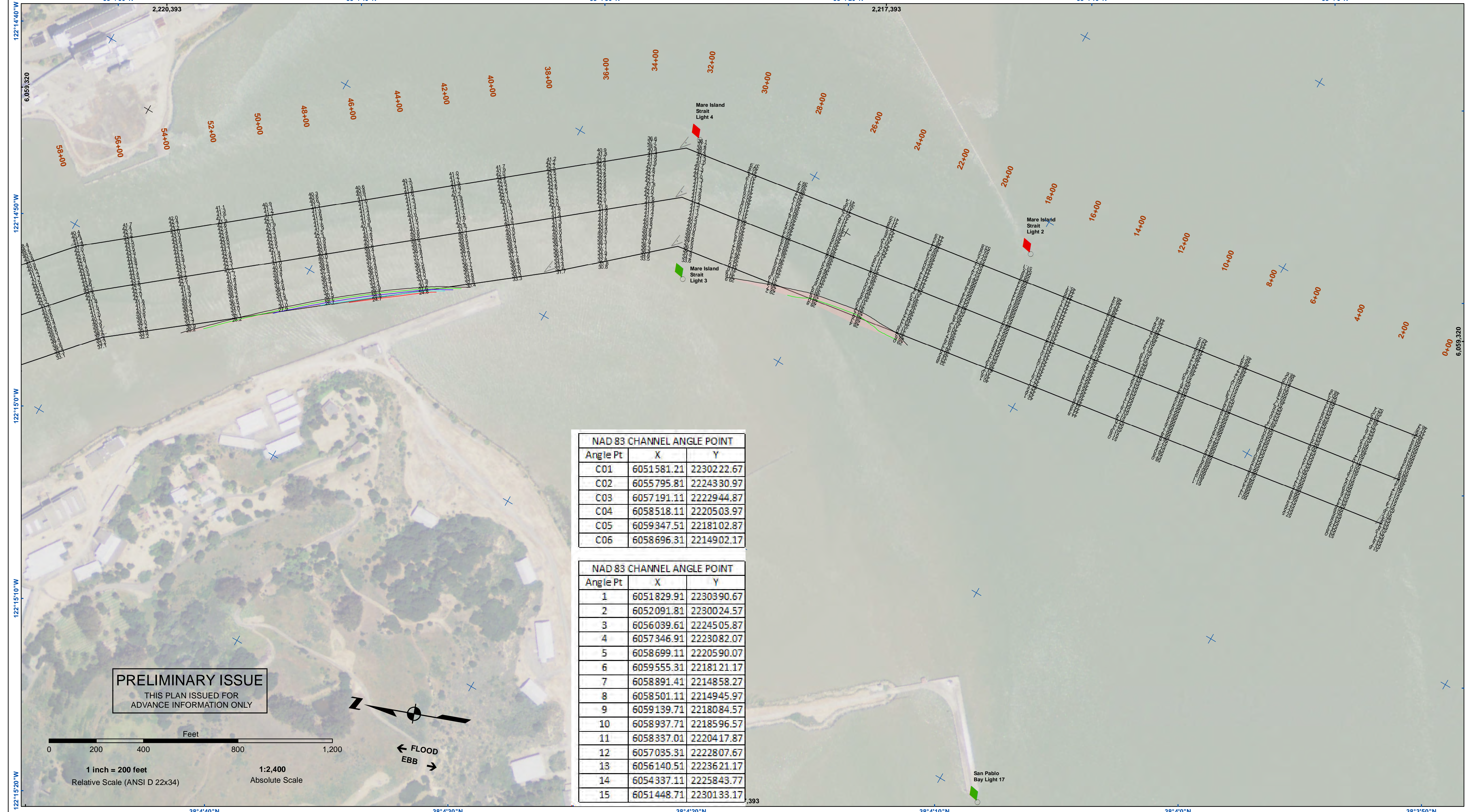
Access Conditions: The United States Government makes no warranty, expressed or implied concerning the accuracy, completeness, and reliability of the information and the data furnished. The United States shall be under no liability whatsoever to any person by reason of any use made thereof. These data belong to the Government. Therefore the recipient may not transfer these data to others without also transferring this Disclaimer.

Distribution Liability: The data represents the results of data collection/processing for a specific US Army Corps of Engineers activity and indicates the general existing conditions. The user is responsible for the results of any of the application of the data for other than its intended purpose.

Prepared Under the Direction of JOHN D. CUNNINGHAM LT COLONEL, C.E., DISTRICT ENGINEER	Chart Date: Jul 22, 2020
Submitted: Hydro Survey Team Leader	Designed by: PDT
Recommended: Chief, Hydro Survey Section	Drawn by: PDT
Approved: Chief, Construction Branch	

MARIN COUNTY
CALIFORNIA
MARE ISLAND STRAIT
CONDITION SURVEY
24 JUNE 2020

Sheet Reference Number
2 of 3



NAD 83 CHANNEL ANGLE POINT		
Angle Pt	X	Y
C01	6051581.21	2230222.67
C02	6055795.81	2224330.97
C03	6057191.11	2222944.87
C04	6058518.11	2220503.97
C05	6059347.51	2218102.87
C06	6058696.31	2214902.17

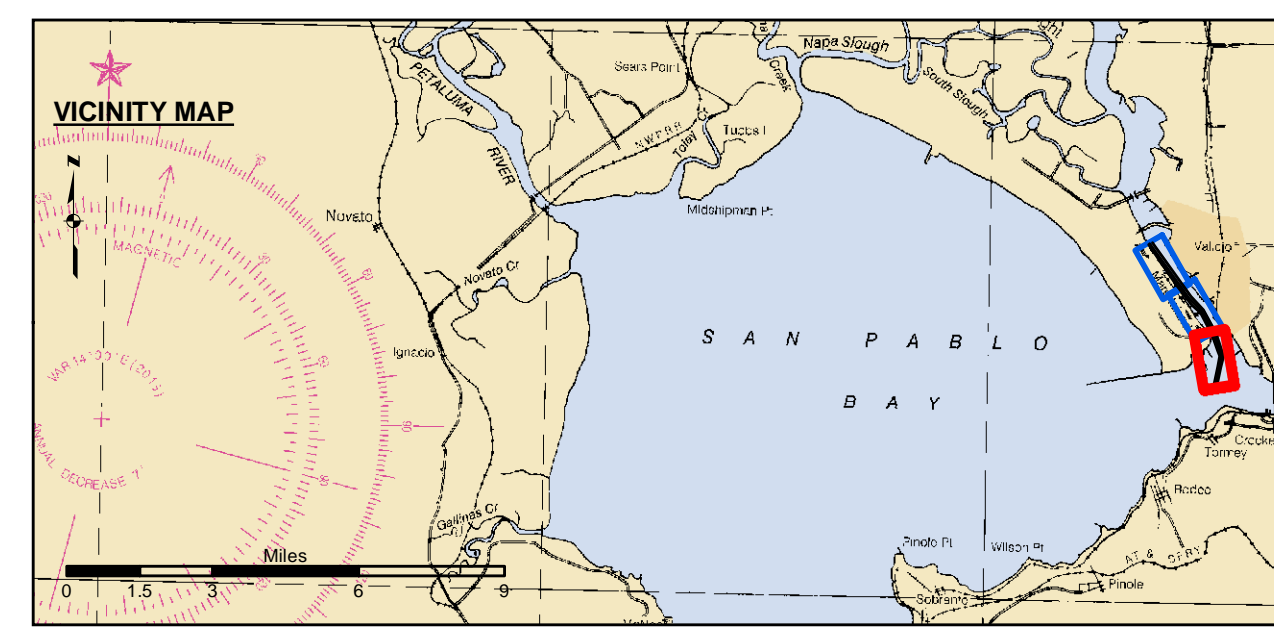
NAD 83 CHANNEL ANGLE POINT		
Angle Pt	X	Y
1	6051829.91	2230390.67
2	6052091.81	2230024.57
3	6056039.61	2224505.87
4	6057346.91	2223082.07
5	6058699.11	2220590.07
6	6059555.31	2218121.17
7	6058891.41	2214858.27
8	6058501.11	2214945.97
9	6059139.71	2218084.57
10	6058937.71	2218596.57
11	6058337.01	2220417.87
12	6057035.31	2222807.67
13	6056140.51	2223621.17
14	6054337.11	2225843.77
15	6051448.71	2230133.17

US Army Corps of Engineers
 San Francisco District
 450 Market Street
 San Francisco, CA 94102

DISCLAIMER
 The United States Government furnishes no warranty, expressed or implied, concerning the accuracy, completeness, or reliability of the information and data furnished. The United States shall be under no liability whatsoever to any person by reason of any use made thereof. These data belong to the Government. Therefore the recipient may not transfer these data to others without also transferring this Disclaimer.

Prepared Under the Direction of JOHN D. CUNNINGHAM LT COLONEL, C.E., DISTRICT ENGINEER	Chart Date: Jul 22, 2020
Submitted: Hydro Survey Team Leader	Designed by: PDT
Recommended: Chief, Hydro Survey Section	Drawn by: PDT
Approved: Chief, Construction Branch	

CALIFORNIA
MARE ISLAND STRAIT
 CONDITION SURVEY
 24 JUNE 2020



— Federal Navigation Channel	⊥ Beacon, General	Contours
■ Shoaling Area	⊗ Obstruction Point	— -30
□ Placement Area	◆ Navigation Buoy	— -29
- - - Anchorage Area	◇ Navigation Buoy	— -28
▨ Wreck Area	● Shoalest Sounding*	— -27
✈ Submerged Wreck		— -26
∠ Angle Point		

NOTES:
 DRAWING NOT TO BE USED FOR NAVIGATION. ONLY CHANNEL CONDITION AT DATE OF SURVEY.
 THE LOCATION OF ALL NAVIGATION AIDS ARE BASED ON INFORMATION PROVIDED BY THE U.S. COAST GUARD. BUOY LOCATIONS REPRESENT THE POSITION OF THE SINKER ONLY.
 SURVEYED BY THE CORPS OF ENGINEERS.
 SOUNDINGS WERE TAKEN BY FATHOMETER AND ARE SHOWN TO THE NEAREST TENTH OF A FOOT.
 SOUNDINGS ARE BASED ON THE DATUM OF MEAN LOWER LOW WATER AT THE LOCALITY.
 VERTICAL CONTROL:
 USACE BM NAPAR03, MLLW=11.609 FT
 MARK LOCATED ON PIER 56, MARE ISLAND
 NOS BM 5218 K 1976 (PID-JT9537), MLLW = 12.136 FT
 MARK US LOCATED AT SOUTH END OF MARE ISLAND
 http://hidesandcurrents.noaa.gov/data_menu.shtml?sn=9415218
 MARE ISLAND, CA & TYPE = BENCH MARK SHEETS
 TIDE GAUGE LOCATION:
 1. NOAA STATION 941 5218 - ONLINE
 2. MARE ISLAND BERTH 2
 HORIZONTAL GPS CONTROL
 COAST GUARD D-BEACON
 PLANE GRID AND COORDINATES ARE BASED ON THE STATE OF CALIFORNIA COORDINATE SYSTEM, LAMBERT CONFORMAL PROJECTION, ZONE III NAD 83, CALIFORNIA, AS DESCRIBED IN SPECIAL PUBLICATION NO. 235, PUBLISHED BY NATIONAL OCEAN SURVEY.
 1.00 INDICATES THE NUMBER AND BEGINNING OF A LINE OF SOUNDINGS.
 PROJECT DEPTH IS 30 FEET FOR MAIN CHANNEL

Sheet Reference Number
 3 of 3